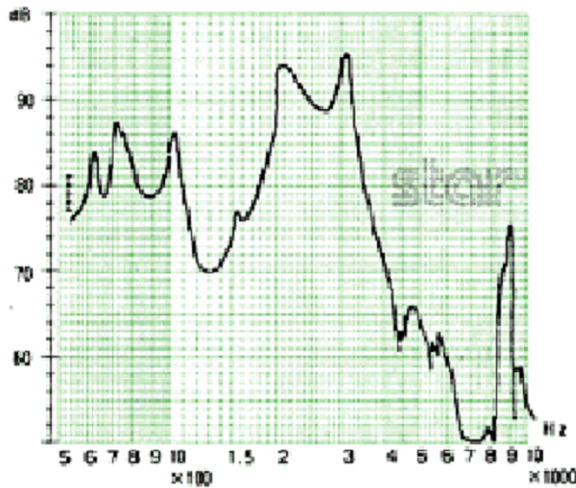


Magnetic Sounder PIN Typ I Magnetic Sounder PIN Type



SPEZIFIKATIONEN / SPECIFICATIONS

MODEL	RMX-12
Nennspannung / Rated Voltage	12,0 V
Betriebsspannung / Operating Voltage	6,0 to 18,0 V
Nennfrequenz / Rated Frequency	2.048 Hz
Minimale Lautstärke bei 10 cm / Min. Sound Output at 10 cm	85 dB
Nennstrom / Rated Current	40 mA
Betriebstemperatur / Operating Temperature	-40°C to +85°C
Spulenwiderstand / Coil resistance	115 +/- 17 ohm
Abmessungen / Dimension	Diameter 16,0 mm x Height 14 mm
Gewicht / Weight	5,0 g

Anderungen und Irrtümer vorbehalten | Rights reserved to change specifications without prior notice